



Updates



Individual & Family Open Enrollment

Open enrollment for the Individual & Family market is November 1, 2020 through January 31, 2021. Keep these important deadlines in mind:

- Enroll by December 15, 2020 for a January 1, 2021 start date
- Enroll by January 15, 2021 for a February 1, 2021 start date
- Enroll by January 31, 2021 for a March 1, 2021 start date

Approved Rates for 2021 Plans

The Department of Insurance, Securities and Banking (DISB) [approved rates for 2021](#) plans offered through DC Health Link.

COVID-19 Special Enrollment Periods

The DC Health Benefit Exchange (DCHBX) Executive Board extended the COVID-19 special enrollment period (SEP). This means District residents who need health insurance, and employees (and their dependents) of small businesses that offer coverage through DC Health Link can get covered now. This SEP is available until January 31, 2021 – or the end of the District’s public health emergency – whichever is later. When applying for coverage using this SEP, customers can choose for it to begin the first of the month, or the first of the following month.

Expanded SHOP Options Through 2022

The DCHBX Board also extended flexible enrollment options. Small businesses can still offer group coverage even if they can’t cover 50 percent of their employees’ premiums, or they have fewer than two-thirds of eligible employees enrolling in or waiving coverage. Usually, to be eligible for coverage, an employer must contribute at least 50 percent toward their employees’ premiums and have two-thirds of employees enroll in or waive coverage. Employers can now take advantage of this flexibility through the end of 2022.

Pay Now Feature for Kaiser Permanente Plans

We recently rolled out a new feature for Individual & Family market customers who enroll in Kaiser Permanente plans. After choosing a plan, these customers now have the option to go straight to a Kaiser Permanente website to pay for their first month’s premium or set up autopay, instead of having to wait for an invoice to arrive. Kaiser Permanente is the only carrier on the Individual & Family market that currently offers this feature.

NAHU Training

We're currently updating the DC Health Link Broker Training hosted by the National Association of Health Underwriters. The updated course will be available shortly after October 15, 2020.

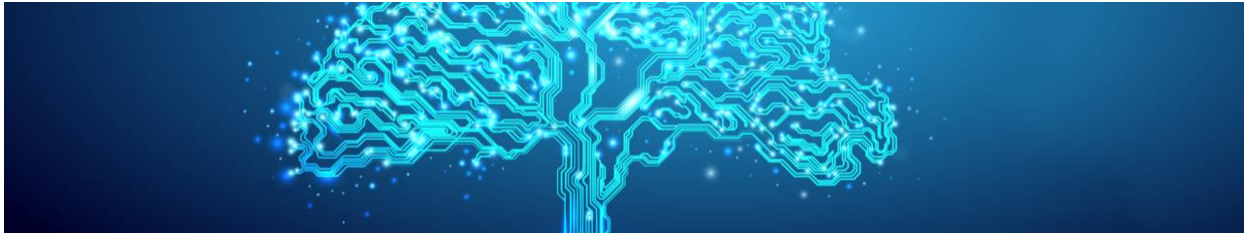
Enrollment Deadlines



Need to know more about DC Health Link's small business deadlines? Use this [tool](#) to enter a coverage effective date, and get a list of important dates for new and renewing groups. You can even print the deadlines with one click.

SHOP DEADLINES TOOL

References and Resources



Check out our Broker Tools

DC Health Link has guides for Brokers with step-by-step instructions.

BROKER TOOLS

Missed the previous Broker News?

Visit our newsroom and catch up on previous editions of this newsletter.

NEWSROOM